



TIGHT LINES

www.pacvtu.org



Volume 22 Issue 6

Cumberland Valley Chapter Trout Unlimited

June 2017

+++++++ Recipient of the 2011 Trout Unlimited "Gold Trout" National Conservation Award ++++++

How the Letort has Changed: My Recollections of 40 years

By Jerry Kerstetter

CONTENTS

Page

Kerstetter's Letort.....	1
Member's Meeting.....	1
Quick Bites & Short Strikes.....	2
Tight Lines Distribution and Mail Chimp.....	2
Calendar of Events.....	2
Membership Info.....	2
Address Change.....	2
New Website.....	2
Fish Commissioners.....	2
President's Message.....	3
Officers & Directors.....	3
Youth Camp.....	4
Messiah College.....	4
Raffle.....	4
Senators Game.....	5
Class A Streams.....	5
Sinkhole.....	6

The Letort is a magnificent trout stream. It maintains a constant flow of cold water for its entire length. The trout food is in plentiful supply with mayflies, stoneflies, scuds, cress bugs, sculpins, crayfish, and of course the terrestrials that fall into the water.

The original flow of the Letort has been changed. Three of those changes actually moved the stream to another location. The first being at the watercress bogs on Spring Garden St. This left branch did not always flow next to this road. Both Vince Marinaro and Charlie Fox said it was moved to that location so watercress bogs could be expanded. Both also said, that after going under the small bridge it meandered through the present-day bogs. This can be corrected as the PA. Conservancy now owns this property. They have stated their intention to restore the original flow. I am not entirely sure how this will be accomplished. CVTU favors this restoration. I know of one living person that remembers that original stream flow in that area, Ed Shank. Hopefully he will show us.

Moving downstream, the Union Quarry moved the Letort at some point. This was a very big stream change. Just below the upper quarry bridge, the original stream made a left turn and flowed in the direction of the quarry office area. They then created a straight flow downstream under the lower bridge and into the meadow. They completed this by adding some rocks and lots of gravel. Years ago, Vince showed me where the original flow had been while pointing at the office area. This original path cannot be restored.

The last stream flow change occurred at the 81 bridge. The Letort was changed to accommodate the bridge. It was the location of the famous "Charlie Fox Fishing Hut." This Letort flow area cannot be changed. Both the quarry section and the 81 bridge
Cont. on Page 6

39
Members and
Guests Attended
the May Meeting

Membership Meeting: None This Month
Senators Game on June 29th

The June Meeting will be a Senators game. See page 5 for more details.
Dave W.

Calendar of Events

2017

Jun 3rd
Fishing Trip
E. Licking Creek

Jun 10th
Perry County Youth Day

Jun 13-14th
Reel Recovery
Allenberry

June 14th
CVTU Board Meeting
Comfort Inn at Shady Lane
Carlisle

Jun 17th
PFFMA Heritage Day
Shady Lane
Carlisle

Jun 18-23rd
Youth Camp
Messiah College
Grantham

June 22nd
Chapter Breakfast
Momma Spriggs Restaurant
Carlisle

Jun 27-28th
Street to Streams
Barnitz Church

Jun 29th
Membership Meeting will
Be a Senators Game
Harrisburg

Aug 25th
Family Picnic
(Location TBD)

Sep 9th
Last Supper
Vince's Meadow
Carlisle

Oct 2-6th
Fishing Trip
South Holston

Oct 29th
Fishing Trip
Spring Creek

Quick Bites and Short Strikes

Dave Weaver - Editor

Submission of articles and suggestions for this newsletter are encouraged and may be sent to dweavflyart@yahoo.com, or you can call me at **338-1952**. The deadline for the next issue is the 22nd of each month. The primary distribution of *Tight Lines* is currently via Mail Chimp email system. *Tight Lines* will be mailed by request only.

Dave W.

~ If you move, change your phone number, or e-mail address, notify us by emailing CVTU at: cvtu052@gmail.com I can change your info at TU National for you. TU also has a "Do Not E-Mail" option for members who do not want to receive TU reminders and solicitations via e-mail...they'll still get it through USPS. You will have to call TU's membership services to make that change.

John Leonard

~ Gov. Wolfe has named B. J. Small as the District 6 Fish & Boat Commissioner. B. J. is the Communications & Media Coordinator for the Chesapeake Bay Foundation in Harrisburg and is also an outdoor writer for *The Sentinel* in Carlisle. B. J. replaces former commissioner Bob Bachman. Gov. Wolfe named Richard Lewis as a Boating At-Large Commissioner to replace Steve Ketterer. Richard is the PATU South-Central Regional Vice President. Both new commissioners are members of the Adams County TU Chapter.

John Leonard

~ If you haven't had a chance to check it out yet, we launched our new website back in February at www.pacvtu.org If you haven't been there yet or have had trouble loading it up, please double check your bookmarks since the old "homestead" address is no longer active. Our new site features an easier to navigate format and is chock full of easily accessible information about chapter happenings. Featured on the front page will be our latest news briefs and links to upcoming chapter activities to help keep you informed. From the Limestoner, to TIC, Youth Camp, FITS crew activities and chapter fishing trips our goal is to be constantly adding fresh content to keep you up to date. In addition to updating what was transferred over from the old web page we'll also have enhanced photo galleries, additional information about our local waters and a bit of chapter history from the archives as time permits. Please check it out and explore a bit. There's more to come!

Tom Miller

CVTU Membership is Currently 584!

CVTU receives a \$15 rebate from the **special \$17.50 first-year membership dues** when the chapter code 052 is marked on the application. **New Members** may also join online at www.tu.org/intro. Be sure to select chapter 052, Cumberland Valley. You may renew your membership by mail or on the web at www.tu.org. You may also renew, or change your membership information by calling **TU Customer Service** at **1-800-834-2419**. For more information, contact **John Zazworsky**, Membership Chairman.

President's Message

From the President, Tom Miller

Cumberland Valley Chapter Officers and Directors (term)

President

Tom Miller, (19)

tomimcmillar@comcast.net

Vice President

Justin Pittman, (19)

flyfishing80@gmail.com

243-7642

Secretary

Matt Perry, (18)

matt1perry1@gmail.com

508-783-5285

Treasurer

Jeb Betar, (19)

jebbetar25@gmail.com

Newsletter Editor

Dave Weaver

338-1952

dweavflyart@yahoo.com

Webmaster

Bill Strockbine

bstrockbine@icloud.com

766-0154

Directors:

Neil Sunday, (19)

neilsunday@aol.com

Don Albright, (17)

dalbr3447@aol.com

776-5047

Tom Baltz, (17)

tbaltz328@comcast.net

486-7438

Clark Hall, (17)

chall2636@verizon.net

697-4549

218-0283

David Stone, (19)

dstone@stonelaw.net

774-7435

Biff Healy, (17)

biffer1966@hotmail.com

254-7386

Mary Shughart, (18)

mary1222@comcast.net

329-9021

Gary Leone, (18)

gmlone12@yahoo.com

John Zazworsky, (18)

johnzaz83@gmail.com

805-8234

Eric Naguski, (18)

eric@riseformsflyfishing.com

579-4484

Chris Yasher (17)

cyasher1@verizon.net

703 254-9419

I hope everybody has been able to get out and enjoy some good fishing over the last month. I've sure been trying to do my best to get out on the water when I can. I'm sure thankful for the rainy weather we've been having, despite it's weekend timing of late. The local freestone and mountain creeks have been at a great level for fishing. What a welcome change in the weather pattern that I hope will continue as a lot of our local spring creeks could sure use a good recharge of the aquifer after the recent drought we've experienced. I know my fingers are crossed.

With us entering the month of June, we have what is probably the busiest month of the year for the chapter, which means plenty of opportunities to get involved! This month is stacked with so many great opportunities to connect with the community either directly through fly fishing, in stream projects or educational outreach. On June 13 & 14 we'll be hosting the annual Reel Recovery event at the Allenberry Resort. And then on June 27 & 28 we're also hosting the Streets to Streams program at Barnitz Church along the Yellow Breeches. These are both very rewarding events for everybody involved, especially for the participants and their families. If you'd like to help out with or learn more about either event, please get in touch with either Justin Pittman or myself. Also in June is the 23rd Annual Rivers Conservation and Fly Fishing Youth Camp. The camp begins on Sunday June 18th this year and runs until Friday the 23th at Messiah College. The camp is an amazing event with an always energetic group of kids who are eager to learn. If you'd like to help out with the camp as a ghillie during either the morning or evening fishing sessions, please contact Biff Healy.

Along with those big three events we also have some other fun opportunities to get involved with the local community. We'll be setting up our outreach table at the PA Fly Fishing Museum's Heritage Day on Saturday June 17 at their new facility along the Letort on Shady Lane. We're excited to be a part of this year's event at the new venue. If you'd like to lend a hand for an hour or so, please get in touch with either Jeb or myself.

If getting out on the water is more your thing, Ken Okorn will be leading his always popular outing up to East Licking Creek on June 3rd. East Licking is a great little stream with plenty to explore, and always worth the trip up north. And finally, the last item to note for the month of June is the special June meeting we're having this year on Thursday June 29th. Instead of a meeting at the firehall this month, we've reserved the Third Base Picnic area at that night's Harrisburg Senator's baseball game. It's going to be a great night for the whole family, bring the kids and grand kids for a picnic night out at the ballgame and share fish stories and tall tales after a fun, rewarding spring! Full details on how to sign up for the picnic-ballgame are on the chapter website at: <http://www.pacvtu.org/merchandise/>

As you can see, our calendar is jam packed in the month June and once again, a big thank you everybody that helps make our chapter one of the most successful around. We wouldn't be able to host so many successful events and activities without the help and dedication of you, our amazing members. Thank you, as always, and if you see something that raises concern on our local waters, please let myself or any other board member now. And of course, if you have any questions or concerns or see something while out on the water, please don't hesitate to get in touch: tomimcmillar@comcast.net or 717-258-8265.

Tight Lines,

Tom

Rivers Conservation and Fly Fishing Youth Camp by Clark Hall

CVTU will be holding the 22nd annual Rivers Conservation and Fly Fishing Youth Camp on June 18-23, 2017, at Messiah College in Grantham. The camp is for boys and girls aged 14 to 17. For more information, or to apply, visit: www.riverscamp.com.

We are looking for gillies for the 10 fishing sessions for the camp. Evening fishing begins at 6PM and ends at dark. Morning sessions begin at 5:30 AM and end at 8:00 AM. Volunteer gillies wear their own vest and carry their own favorite flies to insure they have everything to make the session a successful one for the student. We do ask that gillies **NOT** carry a rod. Working with these young people is a rewarding and memorable time. We hope you will join us as often as your schedule permits. To sign-up for any or all fishing sessions, contact Biff Healy at 254-7386 or email at biffer1966@hotmail.com.

We are also looking for donations of flies for the campers. We are requesting that donors tie 3 dozen of whatever pattern they sign-up for. Signup sheets for flies will be available at membership meetings, or contact Clark Hall at 697-4549 or email chall2636@verizon.net.

For directions to where we will be at Messiah College, go [here](#) or contact Biff or Clark.

Messiah College Directions By Clark Hall

Set-up, registration, class room, fly tying, graduation in the Jordan Science Center

A: GPS: 40.1579 -76.9853 345
College Avenue, Grantham, PA 17027

From western PA:

Take the PA Turnpike east to the Gettysburg exit (236). Take US 15 south to the Lisburn Road exit (2.7 mi). Go east on Lisburn Road to Grantham Road (0.6 mi). Turn right on Grantham Road to College Avenue (1/4 mi). Turn left on College Avenue to the stop sign (and Oakes Museum sign) at the Jordan

Science Center (1/4 mi). Turn right into the parking lot. Enter the Jordan Science Center at the back right of the parking lot.

From eastern PA:

Take the PA Turnpike west to the Gettysburg exit (236). Take US 15 south and continue as above.

Fishing sessions, habitat work, in-stream activities

A: GPS: 40.1579 -76.9853
Creekside Drive, Grantham, PA 17027

From western PA:

Take the PA Turnpike east to the Gettysburg exit (236). Take US 15 south to the Lisburn Road exit (2.7 mi). Go east on Lisburn Road to Mill Road at the 4-way stop sign (0.25 mi). Turn right. Go straight at the next stop sign (do not turn at the little blue Messiah College sign). At (0.56 mi) road bears left and becomes College Ave. Cross the railroad tracks, bear right at the "Y" onto Creekside Drive and go to the covered bridge (0.25 mi). Turn right across the bridge and park at the athletic fields.

From eastern PA:

Take the PA Turnpike west to the Gettysburg exit (236). Take US 15 south and continue as above.

CVTU Chapter Raffle By CVTU

New for 2017-18, Cumberland Valley Trout Unlimited (CVTU) is conducting a special annual raffle to raise funds for the Chapter's cold water conservation and education programs and projects. Although we do a good job of raising funds through your generosity at our annual banquet and smaller raffles, the current funding climate means grant awards for our projected stream improvements and educational programs are more competitive than ever. Each raffle ticket is \$50, and CVTU is only selling 250 tickets for the chance to win this one grand cash prize! The drawing will be held at the 2018 Limestoner Banquet on March 16, 2018 at the Park Inn in Mechanicsburg, PA. Tell your friends, tell your neighbors! These special raffle tickets make for a great gift idea for birthdays or the Holidays with probably a better chance to win than those Lottery

Cont. on Page 5

Take Me Out to the Ballgame! By Tom Miller

As a change of pace and a chance to unwind after a hectic month of events, our monthly meeting will be held on Thursday June 29th, 2017 at the Harrisburg Senator's Ballgame. We've reserved the Third Base Picnic Area that evening which offers a great view of the action and a chance to relax with family and friends! We've got kids of all ages signed up already, from some of our more youthful 'senior' members to their grandkids, this really is a night for the whole family! Ticket prices are \$25 for adults and \$15 for children between 4 & 12, those who are even younger get to enjoy the game for free! The ticket includes a classic catered ballpark buffet of hotdogs, hamburgers, BBQ chicken, baked beans, mac & cheese, cole slaw, chips, cookies and soda & waters. The game starts at 7:00pm with our picnic beginning at 6:00pm and open until 7:30. So come on out to watch the Senators take on the Reading Fighting Phils at FNB Field on City Island.

To reserve your seats, we'd prefer if you signed up through our website's [Merchandise Page](#) via the Paypal link. Or shoot us an email at cvtu052@gmail.com and we can arrange for payment at the gate. Deadline to save your seat is June 14th, we hope to see you there!

Wild Trout Streams Need Your voice! By Tom Miller

On July 10-11, 2017 the Pennsylvania Fish and Boat Commission will be voting to add 135 streams to the Class A and Wild Trout Stream lists. As we're all aware, the presence of wild trout in these streams indicates that these streams are of exceptional quality and deserve the protections these classifications will afford them. This is the first step towards further protections against degraded water quality. Once a stream is classified as a wild trout stream, it receives the Cold Water Fishes designation. This designation requires the stream's protection as trout habitat and the wetlands along the stream are also then classified as Exceptional Value. Furthermore these streams themselves may then qualify for

Exceptional or High Quality designations down the road, not only protecting the fisheries, but also the source of so much of our clean drinking water. Getting these streams onto either the Class A or Wild Trout Stream listings is a vital first step in their protection.

Please make your voice heard in support of these resources, you can file public comments on Class A Streams here:

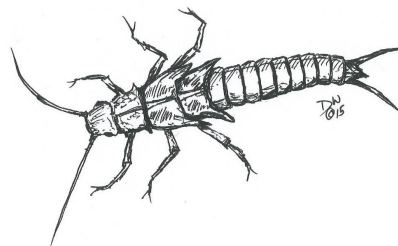
http://pfbc.pa.gov/regcomments/index.htm?title_number=ClassAJuly2017

And here is the link to comments for the Wild Trout Stream Listing:

http://pfbc.pa.gov/regcomments/index.htm?title_number=WildTroutJuly2017

Or letters can also be mailed to John Arway, Executive Director, Pennsylvania Fish and Boat Commission, P.O. Box 67000, Harrisburg, PA 17106

Deadline for comments is **June 5th!** So please don't delay. Thanks, Tom



Raffle Cont.

scratch offs. For more specific information, please see the CVTU monthly membership newsletter. Special raffle tickets will be on sale at CVTU membership meetings and other CVTU activities and events until all of the tickets are sold. Regulations that govern small games of chance activities for nonprofit organizations prohibit CVTU from accepting credit card payments to purchase raffle tickets. If you would like more information, please contact Jeb Betar at jebbetar25@gmail.com or by telephone (571) 643-8101. Feel free to share with friends and neighbors this wonderful opportunity to support Cumberland Valley Trout Unlimited. Raffle ticket sales are open to all.

Letort Sinkhole Repair By Tom Miller

On May 12th Pennsylvania DEP discovered a sinkhole on what is historically known as the "Otto Property" along Letort Spring Run off of South Spring Garden St. On May 13th CVTU was in contact with DEP and began discussing our steps forward. Through coordination with DEP and the land owner, CVTU and other volunteers worked to reestablished the bank that had been breached and was allowing direct flow out of the stream channel into the sinkhole. On Wednesday May 17, we placed about 100 clay and lime sand filled 'sand bags' to satisfactorily reestablish the bank for the time being and prevent outflow from the stream channel, given current water levels. We will be continuously monitoring this area and in coordination with DEP and the landowner hope to find as permanent a solution to this sinkhole as possible. Many thanks to the volunteers who generously showed up on such short notice to lend a hand. Thank you to Dan Welte with Pennsylvania DEP for spearheading the effort and to Union Quarries who generously donated the fill material we needed, thank you.

Pictures of the project are over on our [Facebook Page](#):

How the Letort has Changed. Cont.

section are now permanent.

Agricultural practices have also changed changed the Letort. I can remember when there was a corn field from the CVTU property (Vince's Meadow) to Mr. Otto's house. Run off from the heavy rains entered the Letort in this area. This was not the only area depositing silt into the Letort. These deposits settled on the stream bed, causing elodea expansion. As the elodea grew they captured even more silt coming from upstream. In several locations, the elodea grew bank-to-bank. Water was thus displaced over the banks causing standing waters in the meadows. The siltation was not good for grasshoppers and other land insects. Because the Letort is a low gradient meadow stream it did not have the velocity to move the silt quickly.

Around 1980, Dave Williams (CVTU President) asked a British river keeper to give a demonstration at the Bonnybrook bridge area.

He used a sickle to cut away elodea to form a channel. The water began to flow freely and the silt was washed out. I asked him "how often do you do this on your English chalk streams?" He replied "daily as a section of the stream needed to be cut." His main point was the water needs to flow freely without hindrance. I returned to that area a few days later and saw the cut channels were free of silt, and I could see a hard stream bed. I was impressed with his knowledge of steam maintenance. That became my inspiration point to cut elodea and open channels.

Both Vince and Charlie told me that spawning used to occur between the quarry bridges. Elodea had filled in this area bank-to-bank. The silt I experienced was knee deep in some areas. Dennis Rossiter (CVTU member) and I cut elodea in the early 1980's through this area. We also found rock piles and metal pipes that caused silt accumulation, and elodea thrived. We proceeded to cut the elodea to create free flowing channels which removed the silt and exposed gravel. That fall CVTU held a work party to loosen this gravel. We were all pleasantly surprised to see the number of trout that had moved into the area. Trout are still using this spawning area up to the present. This encouraged me to continue cutting elodea free channels in other areas of the Letort.

The following spring, Vince and I were on the way to the Letort to do some sulphur hatch fishing. On the way, he told me how good the spawning area had cleaned up. He said "more of that needs to be done on the Letort." I remember saying "around your property?" He replied "the whole Letort and get the barrels out." I felt like I had been given my marching orders! I cut channels at Vince's Meadow and below the 81 bridge. The Carlisle sewer plant on Post Road closed around 1980 which opened up many new fishing areas. One morning I checked below Post Road and was shocked to see a nice trico hatch and fish rising. Upon further investigation, I saw trout rising at or below a spring location. I called Vince about

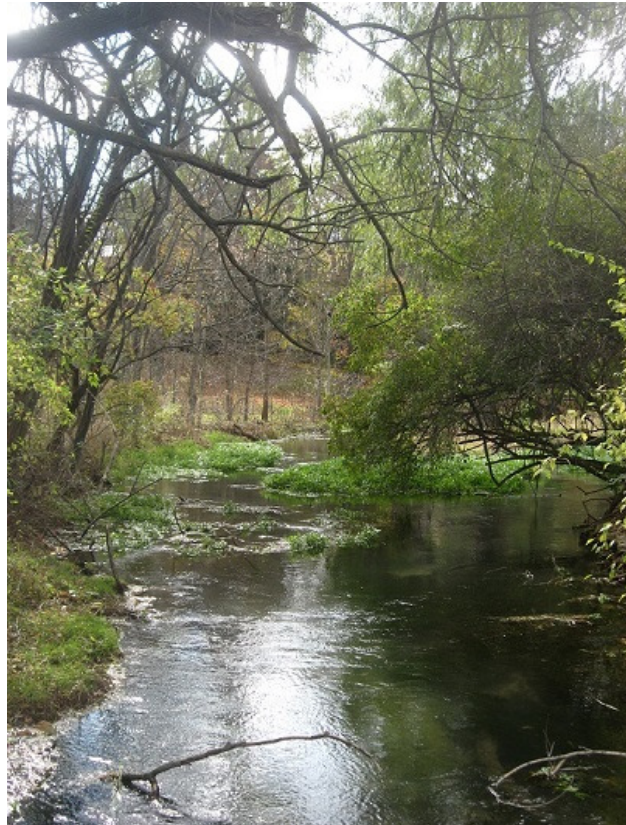
Cont. on Next Page

the hatch and he wanted to go. As we drove to the Letort, Vince told me he had heard I was cutting the elodea. He also said "every time you do that, you are blessed." He then again mentioned the need for the barrels to be removed. He said they were located above the spawning area and up to the 81 bridge. It was after Vince's passing in 1986, that I began to see the barrels he had told me about. The increased flow of the stream had removed two feet of silt off the tops of the barrels. That year, I removed 25 silt filled barrels upstream of the spawning beds. Within two years, more barrels were exposed due to the increased flow of the water. I removed 17 more silt filled barrels. Several years later, CVTU work party members were working on the spawning beds. Neil Sunday and I removed barrel #43.

During the summer of 2016 I discovered 5 barrels just upstream of the spawning area. Three were placed on one side and two on the other in order to obstruct the flow. Cinder blocks and rocks were stacked on them which in effect was a low head dam. I removed these from the stream. The barrel removal count jumped to 48. I know there are still several barrels hiding yet just above the spawning area. These barrels and hook dams had caused a huge siltation problem. As the silt accumulated on the stream bed, the elodea would expand. The water was displaced and flooded the banks, even the meadows in some places. I also believe this silt problem destroyed undercut banks. They may have collapsed but mostly filled in with the excess silt. The banks were also subject to erosion. During these years I removed many other items that had no place in the Letort such as car and truck tires, tire rims and hubcaps, tin cans, two wooden doors, old fence posts and barbwire, 2x4's and 2x6's, pieces of wood panels, plywood pieces, glass bottles, clay and plastic pots, plastic and burlap bags, pieces of drainage pipes, canvas tarp, and railroad ties. Tree branches and tree trunks were left in the water moving them to the side to provide overhead cover and for insects.

I believe the elodea and watercress free section of the Letort is now in transition. This section is now reclaiming its natural

flow, and purging the excess silt. The stream vegetation will return to its natural balance. The English have full time river keepers who have been at this for a LONG time. Over the years CVTU has adopted some of their practices. With the continued dedication and hard work of our members, the Letort will thrive.



Letort. Photo Courtesy: D. Weaver



CVTU Members at Yellow Creek.

Photo Courtesy: B. Healy